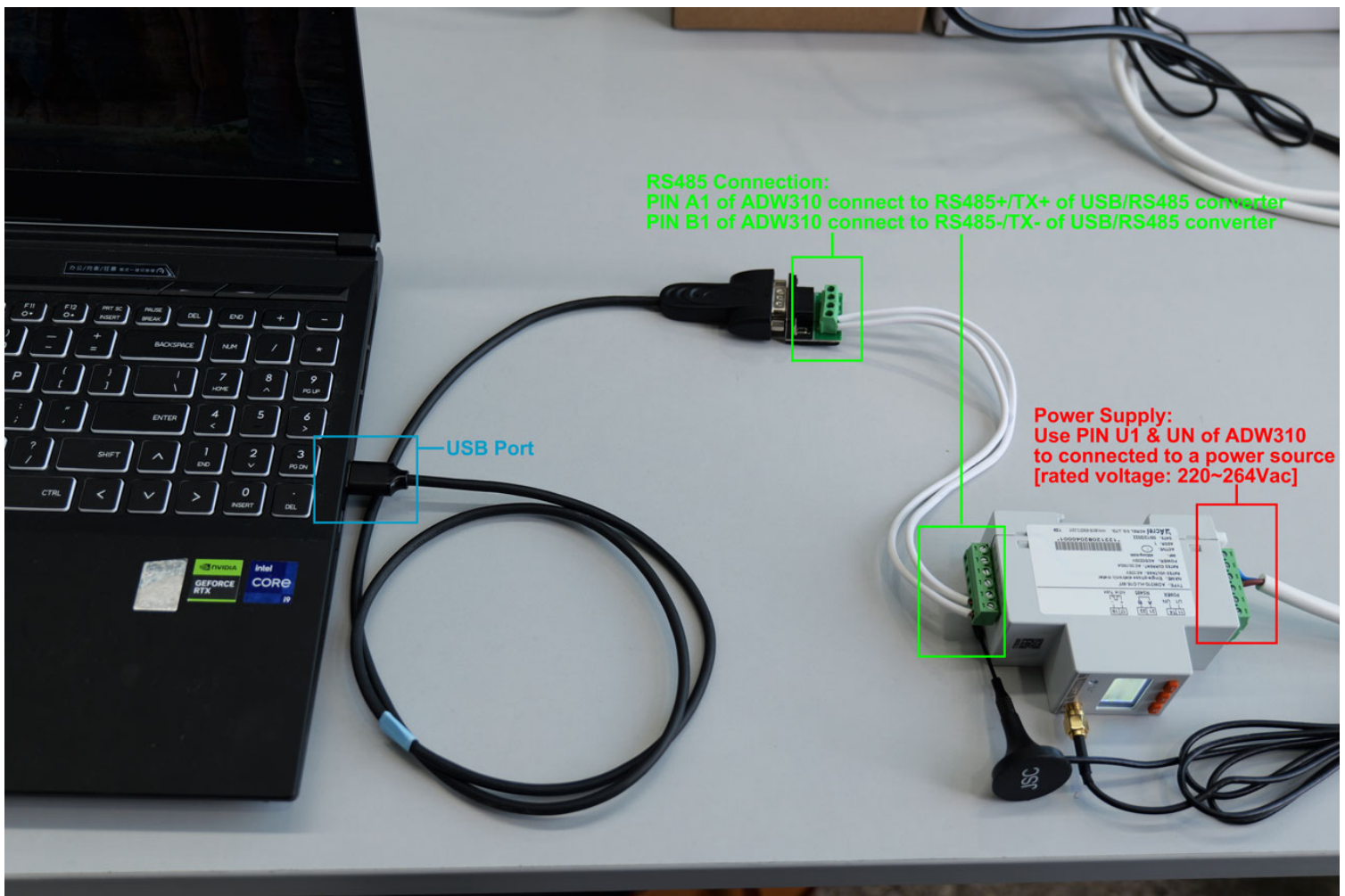


1. Devices connect to Computer via RS485 to USB Converter

(1) For connection between ADW310 and computer by using RS485 to USB converter. USB side of Converter plug in computer USB port, and RS485 side of converter connected to PIN A1 and PIN B1 of ADW310.

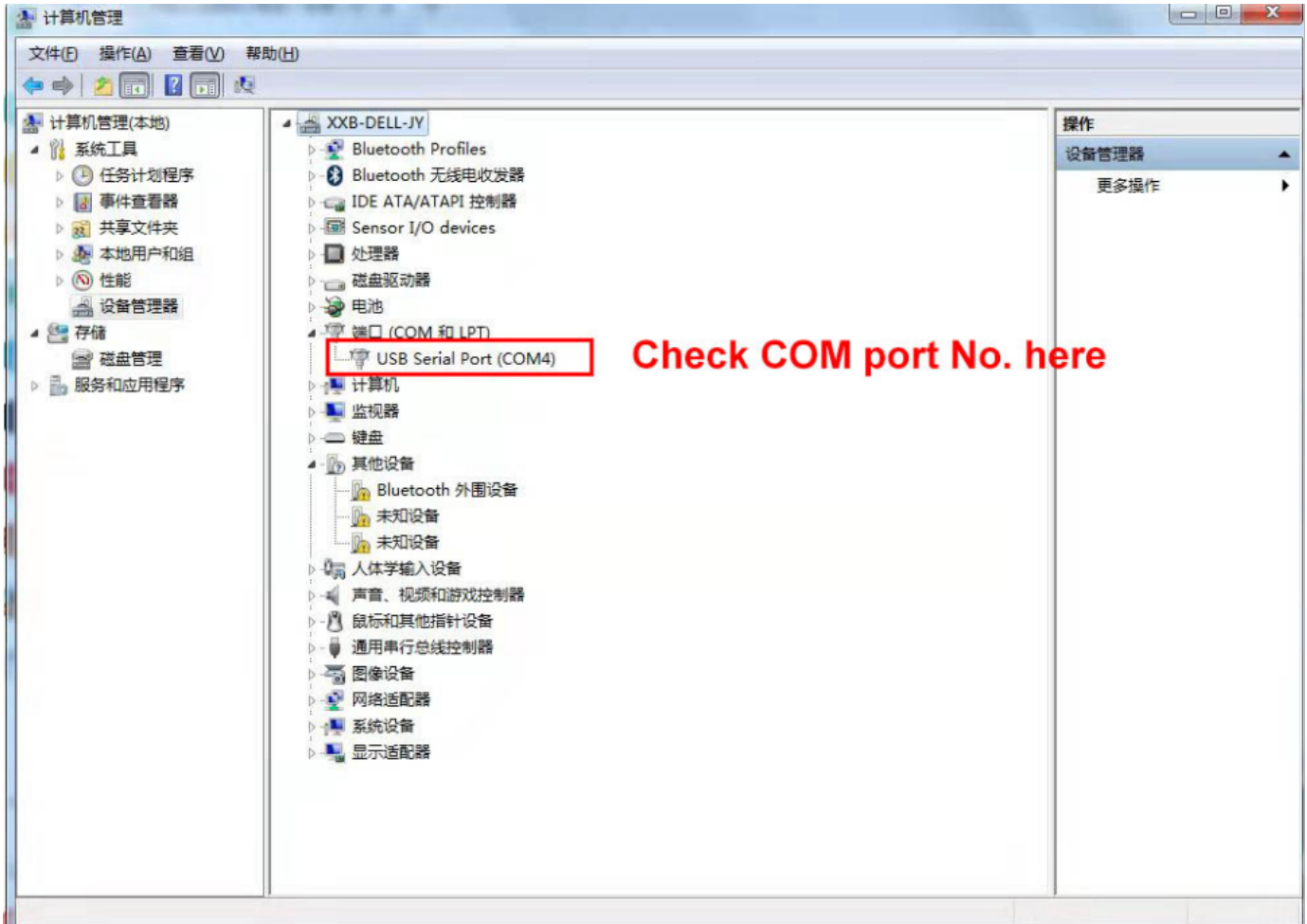
(Noted: PIN A1 of ADW300 connect to "RS485+/Tx+" of converter; PIN #B1 of ADW300 connect to "RS485-/Tx-" of converter)

(2) Power up ADW310 using PIN U1&PIN UN by using power source with the rated voltage of 220~264Vac.



1. Devices connect to Computer via RS485 to USB Conveter

(3) Check COM port on computer (You can check the COM port on the computer' s device manager. If you can' t find it, please update to the latest USB driver)



(4) Open ADW310 Adjustment Software

名称	修改日期	类型	大小
en	2023/3/20 11:45	文件夹	
en-US	2023/2/2 9:02	文件夹	
zh	2023/3/20 11:45	文件夹	
zh-Hans	2023/3/20 11:45	文件夹	
zh-MO	2023/3/20 11:45	文件夹	
ADW310调试软件	2023/2/6 13:11	应用程序	2,164 KB
ADW310调试软件.vshost	2023/2/8 15:20	应用程序	12 KB
Microsoft.VisualBasic.dll	2019/12/6 16:49	应用程序扩展	644 KB
Microsoft.VisualBasic.PowerPacks.Vs.dll	2010/3/18 20:15	应用程序扩展	254 KB

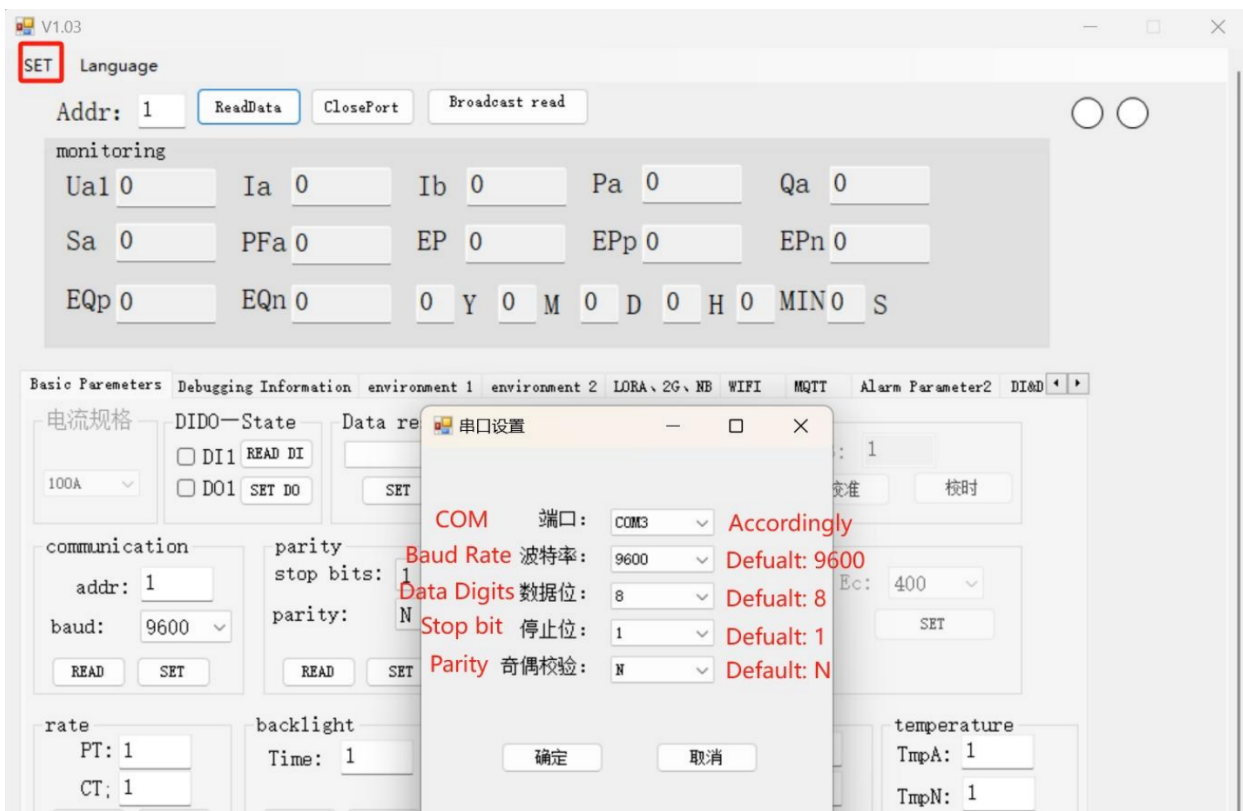
1. Devices connect to Computer via RS485 to USB Converter

(5) Change Language Setting



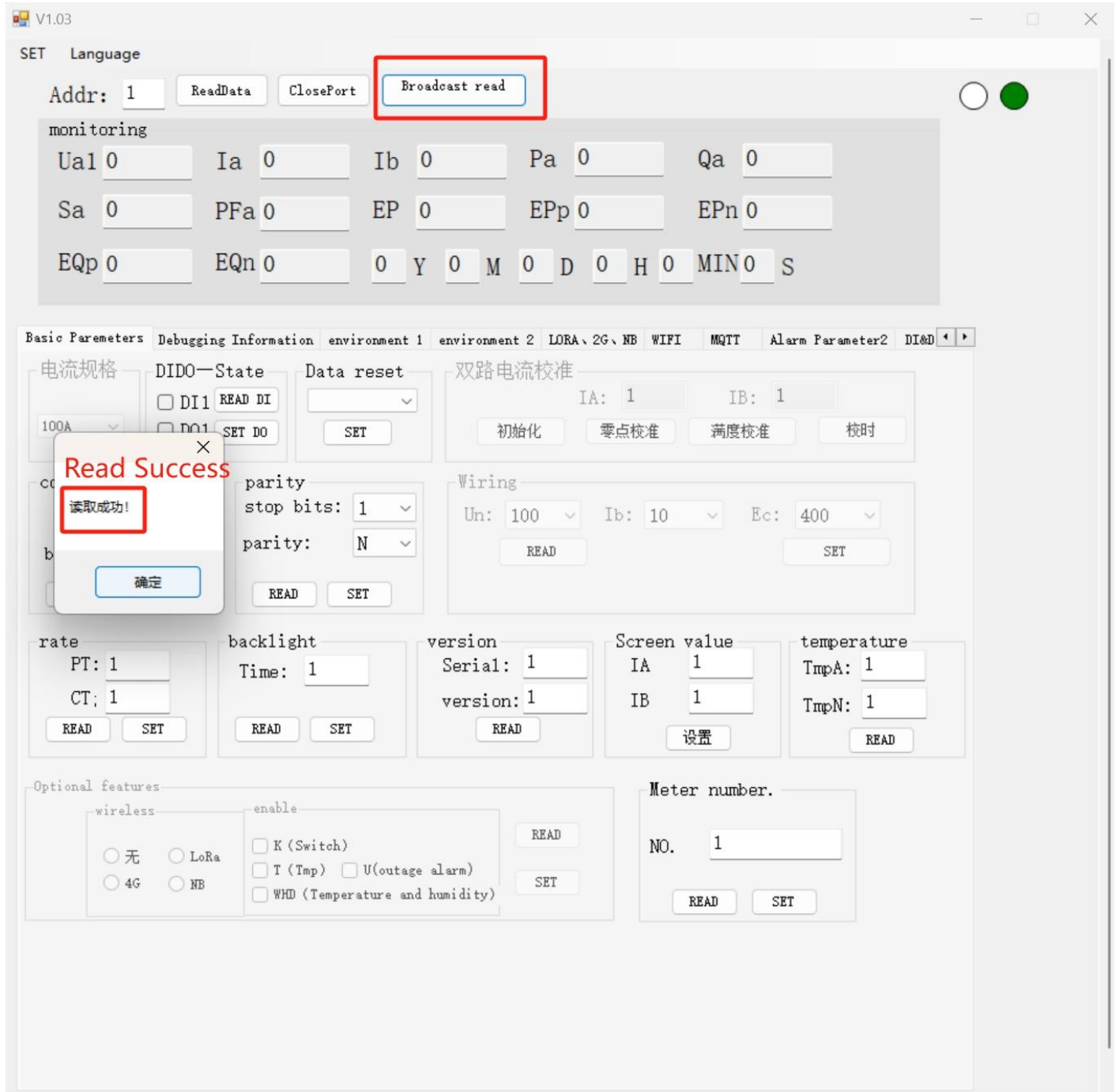
(6) Press "SET" and press "PortSET" button and set the parameter as below

(Note: COM No. should be as same as what we checked in the computer manager before)



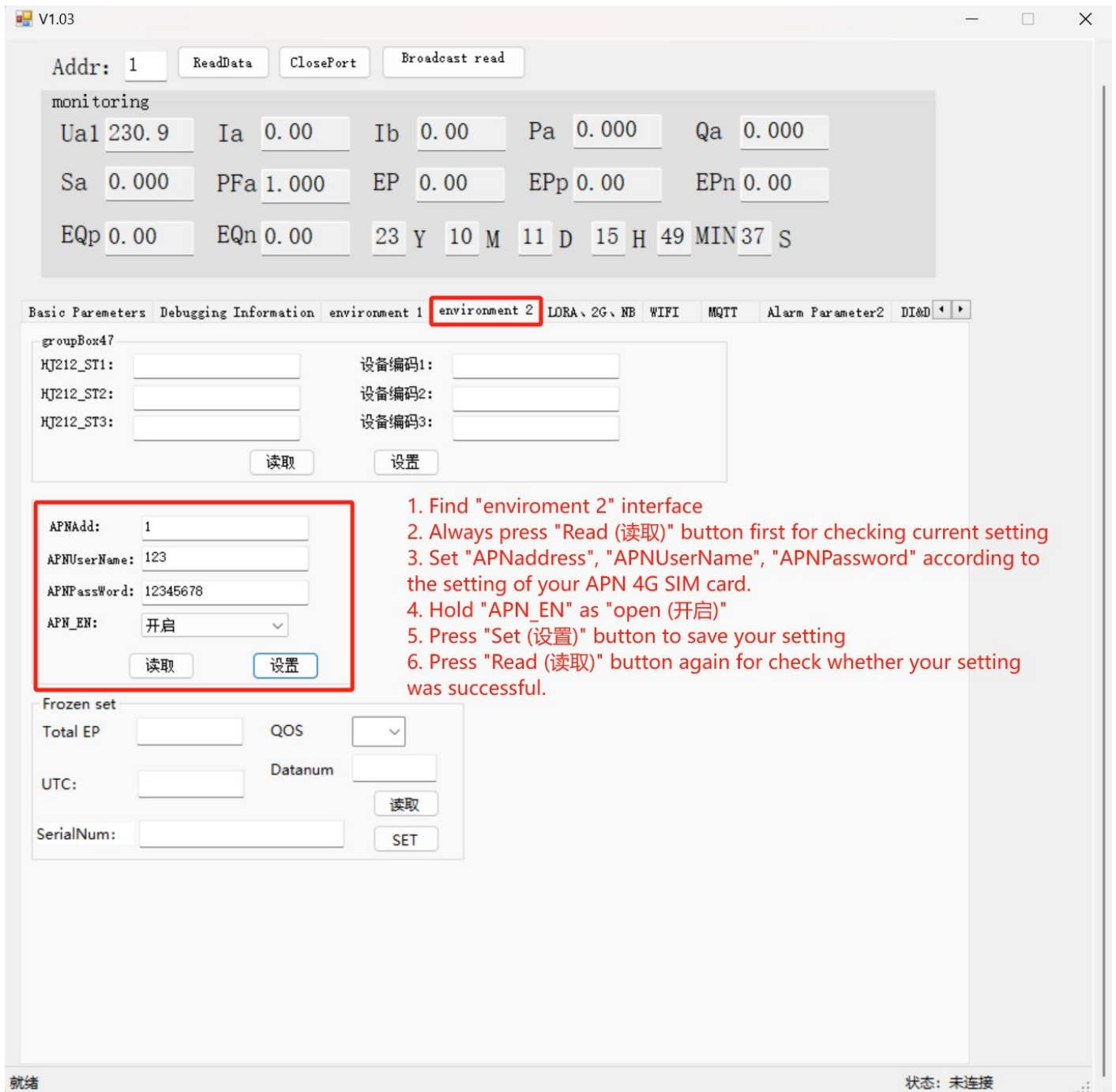
1. Devices connect to Computer via RS485 to USB Converter

(5) Click “ Broadcast Read Address”



2. APN Configuration [For ADW300-4GHW, 4G Version]

- (1) Find "environment 2" interface.
- (2) Always press "Read (读取)" button first to check the current APN setting.
- (3) Configure the APN setting according to your APN setting on 4G SIM card [If no APN username and password, then remain blank for these 2 settings]
- (4) Press "Set(设置)" button for saving the setting.
- (5) Press "Read (读取)" button for checking whether setting complete.
- (6) **Noted:** APN_EN remain "open (开启)".



V1.03
— □ ×

Addr: 1
ReadData
ClosePort
Broadcast read

monitoring

Ua1	230.9	Ia	0.00	Ib	0.00	Pa	0.000	Qa	0.000						
Sa	0.000	PFa	1.000	EP	0.00	EPp	0.00	EPn	0.00						
EQp	0.00	EQn	0.00	23	Y	10	M	11	D	15	H	49	MIN	37	S

Basic Parameters
Debugging Information
environment 1
environment 2
LORA、2G、NB
WIFI
MQTT
Alarm Parameter2
DI&D

groupBox47

HJ212_ST1:	<input type="text"/>	设备编码1:	<input type="text"/>
HJ212_ST2:	<input type="text"/>	设备编码2:	<input type="text"/>
HJ212_ST3:	<input type="text"/>	设备编码3:	<input type="text"/>

读取
设置

APNAdd:	<input type="text" value="1"/>
APNUserName:	<input type="text" value="123"/>
APNPassword:	<input type="text" value="12345678"/>
APN_EN:	<input type="text" value="开启"/>

读取
设置

Frozen set

Total EP	<input type="text"/>	QOS	<input type="text"/>
UTC:	<input type="text"/>	Datanum	<input type="text"/>

读取

SerialNum:	<input type="text"/>
------------	----------------------

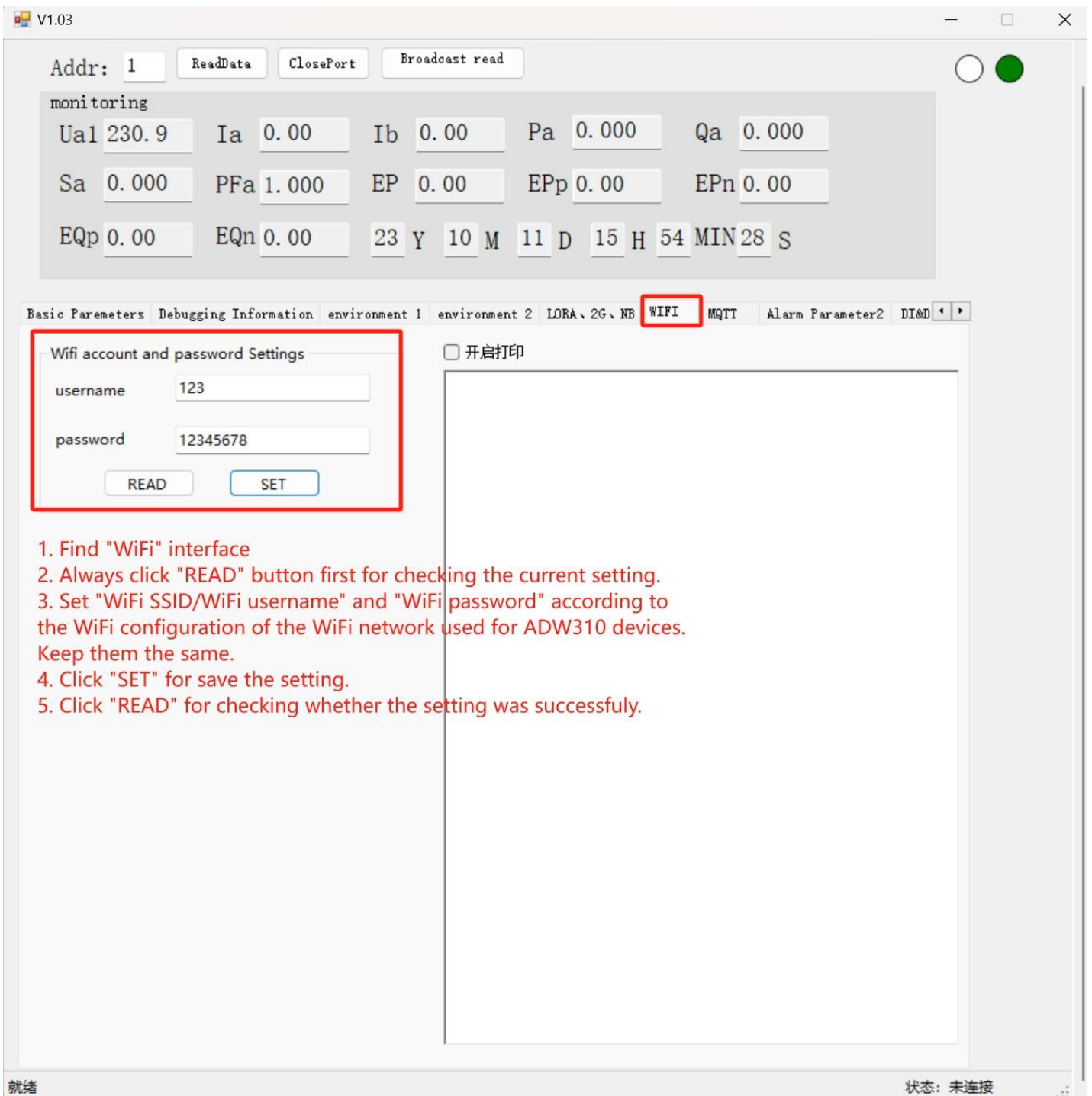
SET

1. Find "enviroment 2" interface
2. Always press "Read (读取)" button first for checking current setting
3. Set "APNAddress", "APNUserName", "APNPassword" according to the setting of your APN 4G SIM card.
4. Hold "APN_EN" as "open (开启)"
5. Press "Set (设置)" button to save your setting
6. Press "Read (读取)" button again for check whether your setting was successful.

就绪
状态: 未连接

3. WiFi SSID&Password Configuration [For ADW300-WF, WiFi Version]

- (1) Find "WiFi" interface.
- (2) Always press "Read (读取)" button first to check the current WiFi setting.
- (3) Set "WiFi SSID/WiFi username" and "WiFi password" according to the WiFi configuration of your current WiFi network used for ADW310 devices. Keep their setting the same.
- (4) Click "SET" button for saving the setting.
- (5) Click "READ" button for checking whether the setting was successful.



The screenshot shows the software interface with the 'WiFi' tab selected. The 'Wifi account and password Settings' section is highlighted with a red box. It contains two input fields: 'username' with the value '123' and 'password' with the value '12345678'. Below these fields are 'READ' and 'SET' buttons. The 'SET' button is highlighted with a blue border. The interface also shows a 'monitoring' section with various numerical values and a 'Basic Parameters' section with a '开启打印' checkbox.

1. Find "WiFi" interface
2. Always click "READ" button first for checking the current setting.
3. Set "WiFi SSID/WiFi username" and "WiFi password" according to the WiFi configuration of the WiFi network used for ADW310 devices. Keep them the same.
4. Click "SET" for save the setting.
5. Click "READ" for checking whether the setting was successfully.